

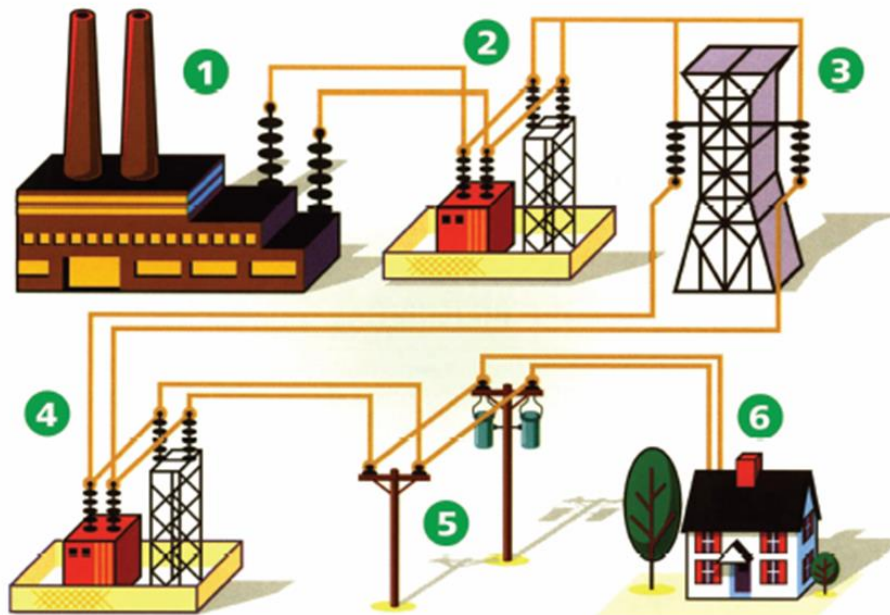


Future Hereford Feeder

September 9, 2017

Overview of the Power Delivery System

HOW ELECTRICITY GETS FROM POWER PLANT TO PEOPLE

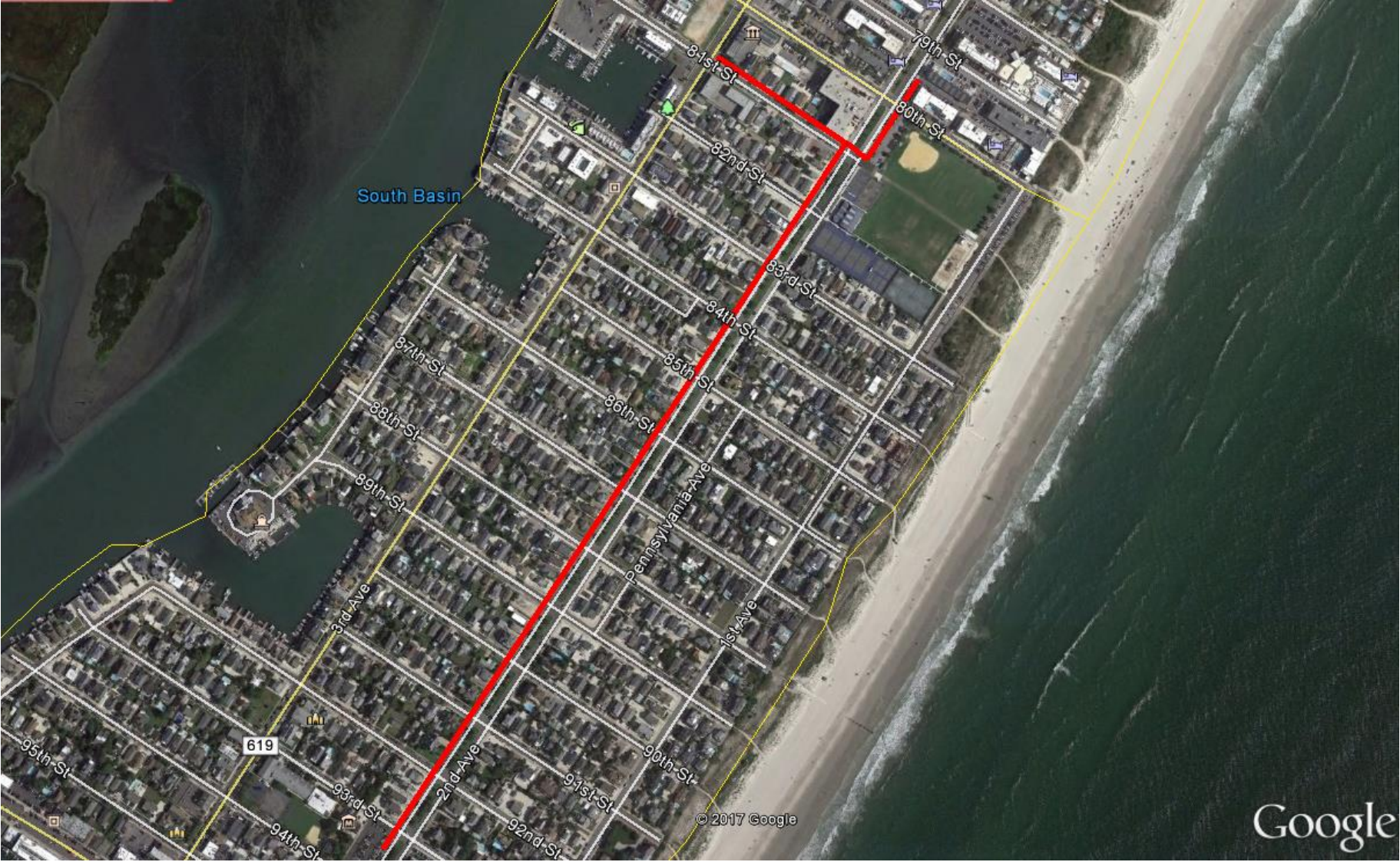


- 1 Electricity leaves a power plant
- 2 Voltage is increased at a "step-up" substation
- 3 Electricity travels through a high-voltage transmission line to the area where power is needed
- 4 Voltage is decreased, or "stepped-down", at another substation
- 5 Electricity is distributed locally through power lines
- 6 Electricity is delivered to homes and businesses

Project History and Timeline

- July 2016 - 69kV Transmission Lines and Peermont Substation in service
- October 4th, 2016 - Council Meeting proposing Hereford Feeder
- October 10th, 2016 – Public meeting to discuss Hereford Feeder
- Avalon Ocean Feeder work to begin October 2017 – December 2017
- Stone Harbor Hereford Feeder work to begin February 2018 – May 2018

Proposed Hereford Feeder Project Scope and Path



Benefits of new Hereford Feeder

- Segmentation of customer load
- All island load is coming from Peermont Substation
- Operation flexibility with feeder ties
- Will use existing structures along Second Ave.
- Reduction in restoration process

Questions?