



Merger & Storm Response



An Exelon Company

Presented by Ronnie Town
June 10, 2017

Agenda

- Overview
- Merger
- Storm Preparation & Restoration
- Mobile App
- Q& A

Atlantic City Electric At A Glance

- Atlantic City Electric serves 550,000 customers
- First incorporated in 1886
- Employees: 1,000
- Service territory: 2,700 square miles in the eight southern counties of NJ
- Facilities: 16
- Substations: 109
- Miles of distribution lines: 10,088
- Miles of transmission lines: 1,139
- Over 130 years in business



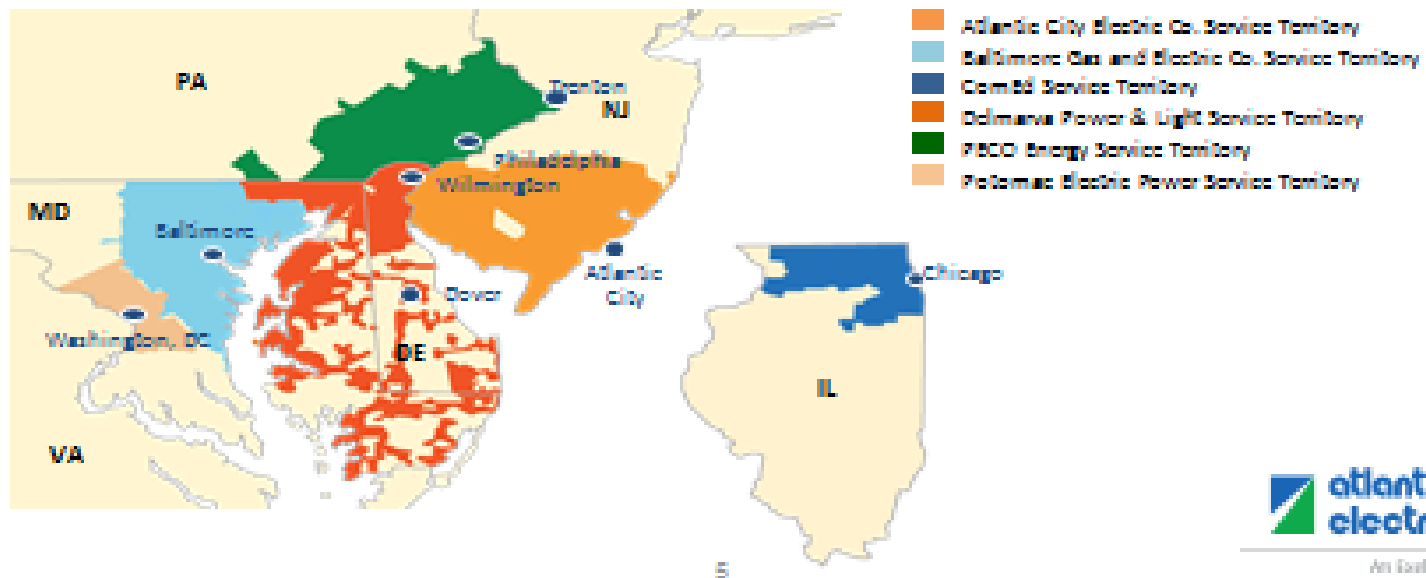
Merger Benefits

- \$126 Million in Benefits
 - Honor Most Favored Nation (Was \$56 Million)
 - Includes \$15 Million Energy Efficiency Programs
 - Includes \$6 Million Workforce Development (6 years)
 - Includes \$4 Million Helping Hands for low-income programs
 - Includes \$62 Million bill credit of \$113.16 for all customers
 - Another \$22 Million additional rate offsets effective June 2017
- Hired over 60 employees
- Utilizing other sister companies for storm restoration
- Donated over \$500,000 in Charitable Giving

Merger Update

ACE is an Exelon Company

- Atlantic City Electric and all Pepco Holdings utilities now have the added strength and availability of additional resources as members of the Exelon family of companies. The Exelon utility companies include Atlantic City Electric, Baltimore Gas & Electric, ComEd, Delmarva Power, PECO, and Pepco.
- Best practices and available resources from this extended Exelon utility network are now integrated into our operational planning to help optimize our restoration and response efforts.



An Exelon Company

Storm Damage and Restoration



Artisan Company

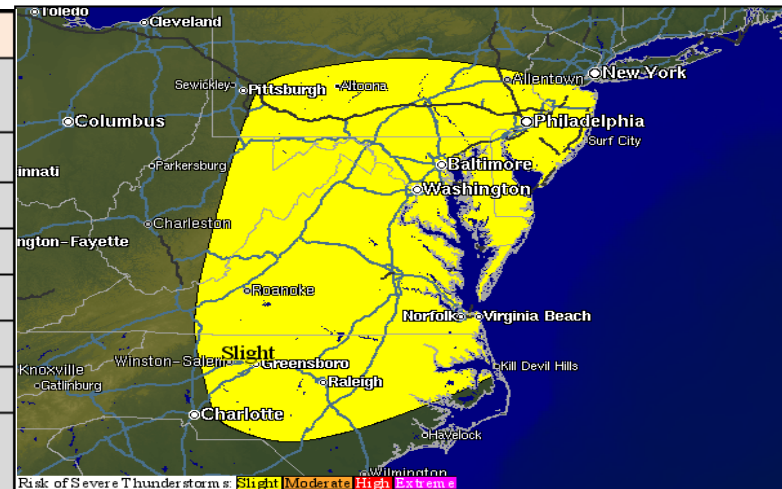
Everyday Preparedness Activities

- Emergency Operation Plan & Operational Response Plans
- Drills (Internal & External participation)
- Weather Monitoring – StormGeo, NOAA

StormGeo



PH	Thursday, May 25, 2017					Friday, May 26, 2017					Saturday, May 27, 2017				
	Current	High	Direction	Max Wind	Max Gust	Low	High	Direction	Max Wind	Max Gust	Low	High	Direction	Max Wind	Max Gust
Western ACE	68	68	E	14	22	59	75	W	18	28	58	74	W	6	8
Eastern ACE	67	67	E	18	28	60	74	W	21	29	61	68	NW	7	14
DPL-North	67	68	E	14	20	59	75	W	18	28	60	76	NW	6	8
DPL-South	67	75	S	16	24	61	78	W	18	28	61	76	NW	5	8
DC	67	69	E	11	15	60	76	W	17	26	62	79	SE	5	8
Montgomery	70	70	E	11	15	57	73	W	17	26	59	77	SE	5	11
Prince Georges	66	74	S	11	15	59	75	W	16	25	61	78	S	6	13



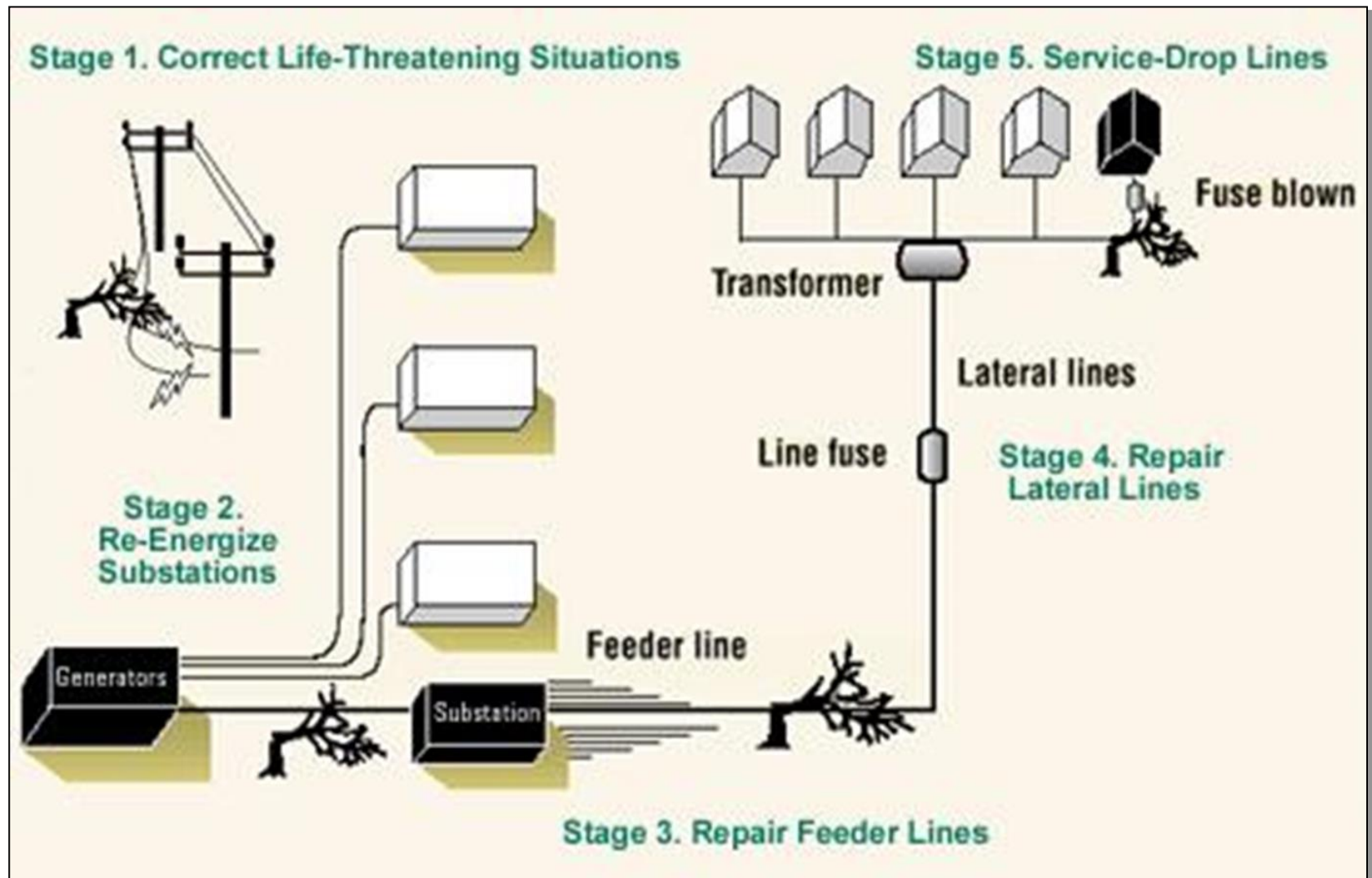
Emergency Restoration Process

- Preparation
 - Communicate key stakeholders
 - Conduct internal and external conference calls
 - Schedule Staffing
- Assessment
 - Storm Over
 - Is it safe to restore?
 - Wind less than 35mph
 - Access
 - Assessment teams

Our crews restoring service

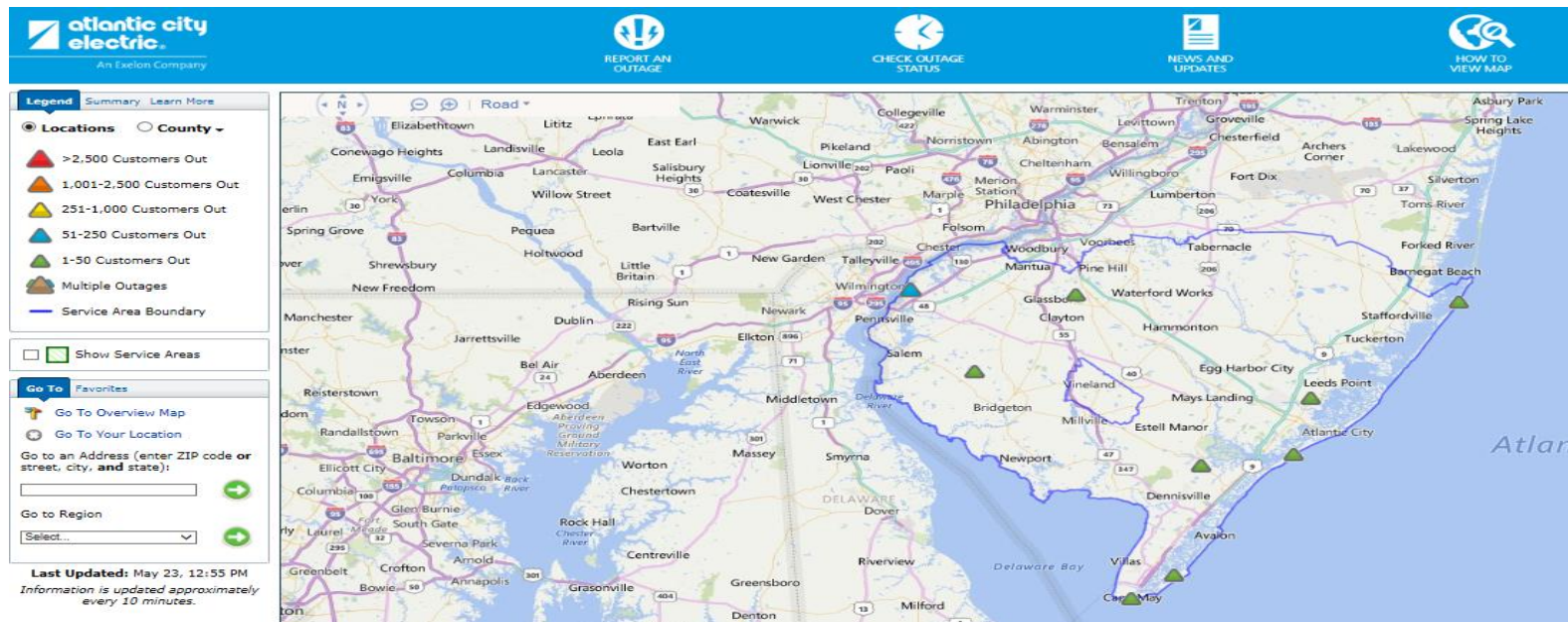


Restoration Priorities



Storm Communication Activities

- **Public Officials:** BPU, State, County & Municipal Officials
 - Wire Down response
 - ETR management
- **Customers:** Atlantic City Electric Mobile App, Facebook, Twitter & Print/Radio ads.
 - Outbound calls to all customers before storm



Mobile App Functionality

- On ACE's website (atlanticcityelectric.com) or download the mobile app:
- My Account Secure Sign-on
- View and Pay Bill
- Energy Use Data
- **Outage Reporting and Map**
- **Push Alerts for Outage Notification**
- **Streetlight Problem Reporting**
- Social Media
- News and Information



Storm Response Activities

What's New?

- Mobile Command Vehicle
- Logistics Trailers
- Drones



How can you prepare?

- Hurricane Season began June 1st
- Visit AtlanticCityElectric.com - get ETR's & other important information
- [Download our mobile app](#) - get mobile access to the same information
- Do we have your phone # updated?
- Have a plan for your family
- Prepare a **Go-Kit**
- Report outages and downed wire. Stay clear of downed wires.



Safety is not a secret... Spread the word!



Questions?